



**SAN FRANCISCO BAY**

**RESTORATION AUTHORITY**

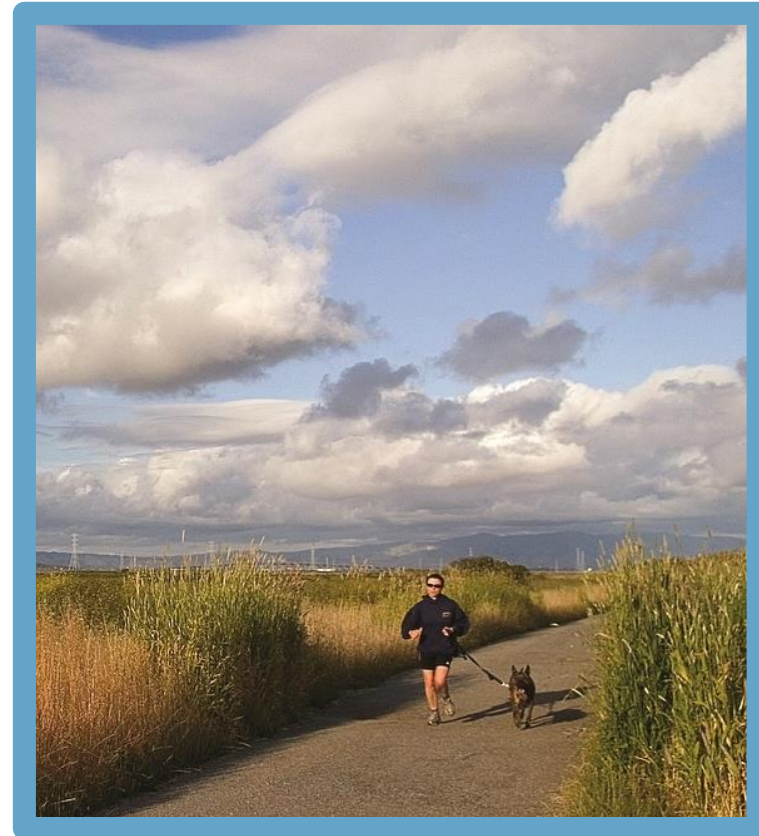
# The Restoration Authority and Measure AA: Orientation

Linda Tong, Deputy Program Manager  
Sara Haugen, Project Manager

May 16, 2025

# What is the SF Bay Restoration Authority?

- The San Francisco Bay Restoration Authority was created by the legislature in 2008 due to the urgent need to restore the Bay.
- It has a Governing Board made up of local elected officials across the region.
- A community-based Advisory Committee helps guide the Authority.
- An Independent Oversight Committee provides an unbiased annual review of the Authority's work.
- Measure AA, which the Authority placed on the ballot in June 2016, generates funds to accomplish its mission.



# SF Bay Restoration Authority Act: Funding Requirement

## The Restoration Authority can fund:

- **Habitat projects** that will restore, protect, or enhance tidal wetlands, managed ponds, or natural habitats along the shoreline.
- **Flood management features** that are part of a habitat project.
- **Public access or recreational amenities** that are part of a habitat project.

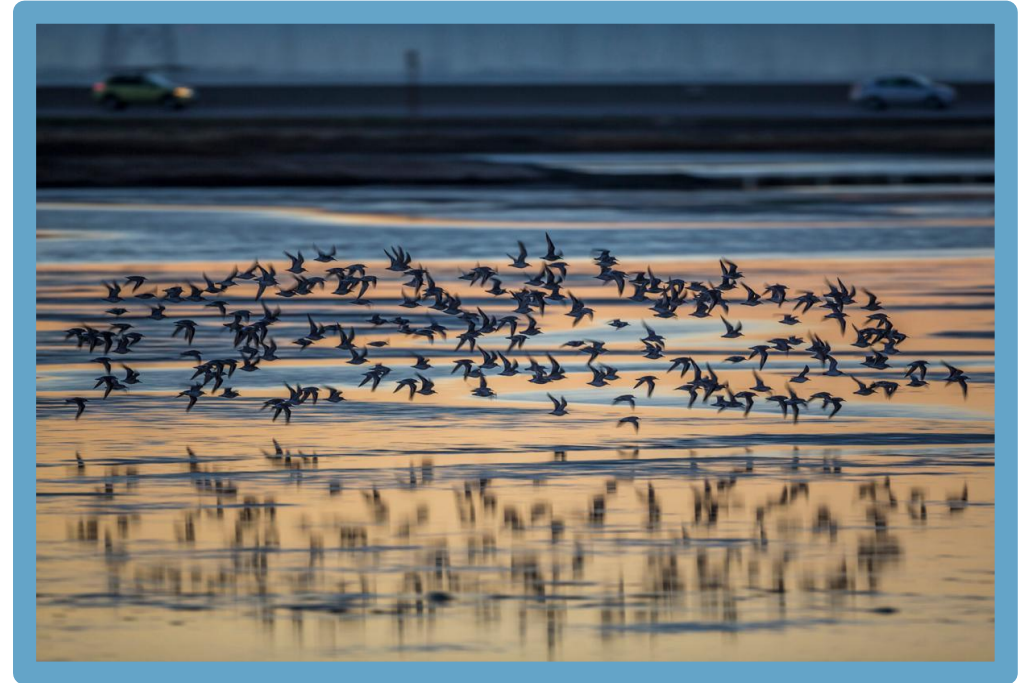


Photo: National Geographic



# Where is “along the Shoreline”?

- **Subtidal Habitats.** Area lying below mean low tide, within a reasonable distance of the shoreline.
- **Baylands.** Areas that lie between the maximum and minimum elevations of the tides over multiyear cycles, including those areas that would be covered by the tides in the absence of levees or other unnatural structures, including the portion of creeks or rivers located below the head of tide.
- **Transitions Zones.** Uplands adjacent to potential or actual tidal wetlands that can provide transitional habitat and/or marsh migration space, as well as areas that are needed to enhance the project’s resilience to projected sea level rise.



# Measure AA Eligibility Criteria: Safe, Clean Water and Pollution Prevention

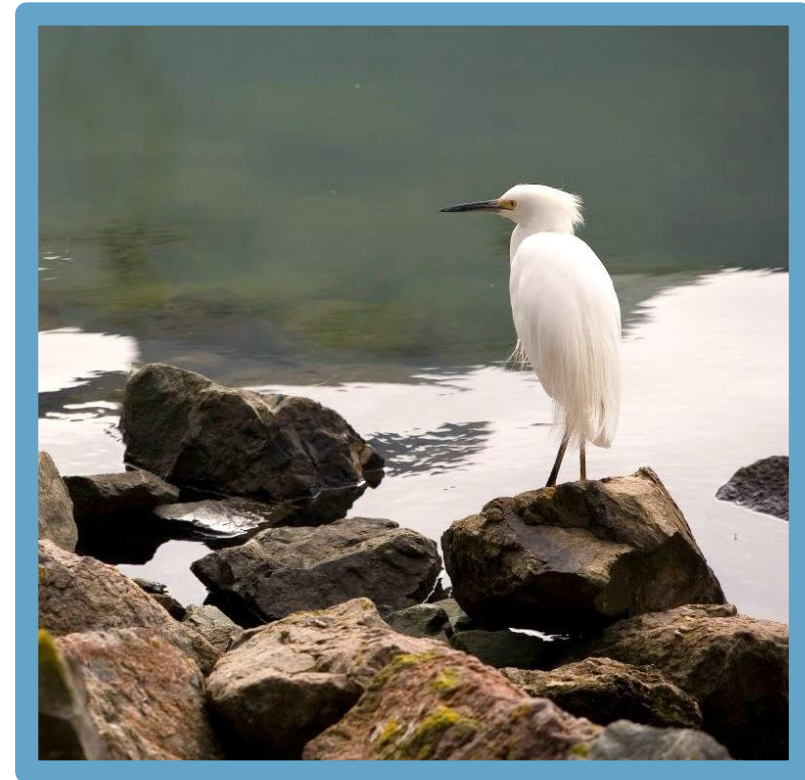


- Improve water quality by **reducing pollution and engaging in restoration activities**
- Reduce pollution levels through **shoreline cleanup and trash removal**
- **Restore wetlands** that provide natural filters and remove pollution
- **Restore creeks where they flow into the Bay**



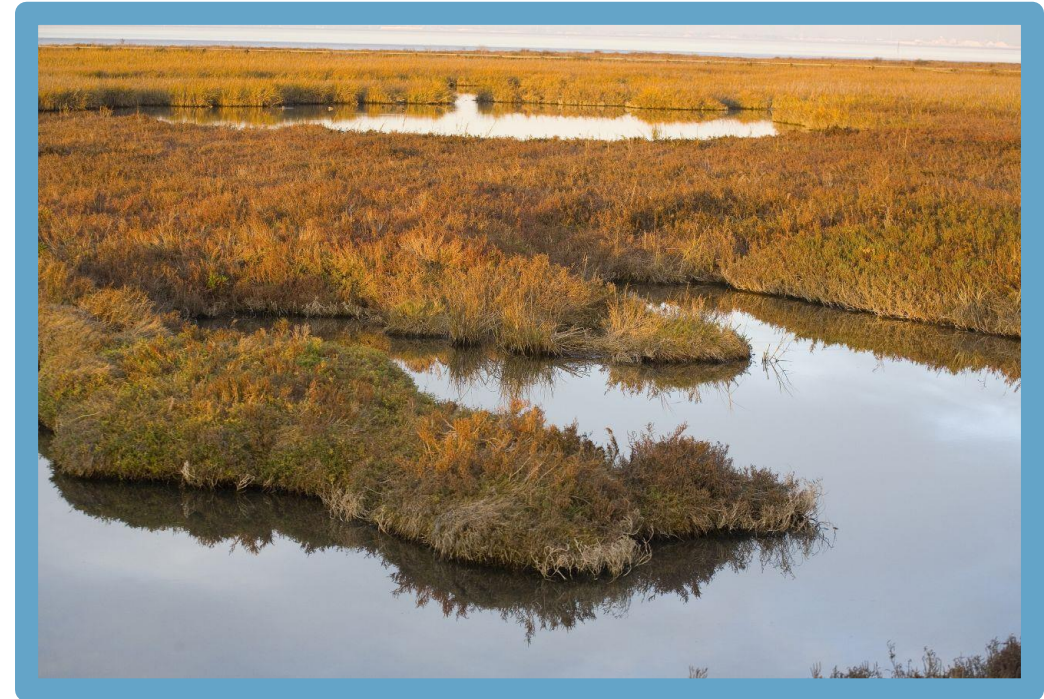
# Measure AA Eligibility Criteria: Fish, Bird and Wildlife Habitat

- **Enhance** the SF Bay National Wildlife Refuge, shoreline parks and open space preserves and other **public lands for expanded habitat**
- **Protect and restore wetlands and other Bay and shoreline habitats** to benefit wildlife including shorebirds, waterfowl, fish



# Measure AA Eligibility Criteria: Natural Flood Protection

- Provide nature-based flood protection through **wetland and habitat restoration**
- **Build and improve levees** that are a necessary part of wetland restoration activities



# Measure AA Eligibility: Shoreline Public Access

**To provide safer and improved public access, as part of and compatible with wildlife habitat restoration projects in and around the Bay:**

- **Construct new, repair existing, and/or replace deteriorating public trails, signs and related facilities** along the shoreline and manage these facilities
- **Provide interpretive materials and special outreach events** about pollution prevention, wildlife habitat, public access, and flood protection, to protect the Bay's health and **encourage community engagement**



**SAN FRANCISCO BAY**  
RESTORATION AUTHORITY



# Measure AA Prioritization Criteria



- Greatest positive impact
- Greatest long-term impact
- Geographic distribution
- Leverage state and federal dollars, public/private partnerships
- Benefit economically disadvantaged communities (EDCs)
- Benefit region's economy
- Engage youth and young adults
- Incorporate monitoring, maintenance and stewardship
- Meet selection criteria of Conservancy, SF Bay Conservation and Development Commission and SF Bay Joint Venture
- Tribal Engagement



## Measure AA “Likelihood of Success” Criteria

### Project’s Likelihood of Success, based on:

- Applicant’s capacity and resources to complete and maintain the project
- Project’s level of community involvement and benefits and/or innovative partnerships



# What are "innovative partnerships" and "community benefits"?

## **Innovative partnerships – collaboration between:**

- community-based nonprofits; environmental nonprofits; federal/state/local/tribal governments; health care providers; faith-based organizations; philanthropies; civic organizations; educational institutions; arts organizations, local businesses, or others.

## **Benefits to communities, especially economically disadvantaged communities (EDCs):**

- direct involvement and support of local community groups; track record working within communities; increase relevance of messaging and outreach
- alleviate multiple stressors within communities, e.g. need for recreational amenities, resilience to climate change, reductions in pollution burden, civic engagement, leadership development opportunities.
- For examples of strategies, see Coastal Conservancy's [\*Tips for Meaningful Community Engagement\*](#)



# Eligible Grantees and Locations

- **Eligible Grantees:**
  - federal, state, and local agencies
  - tribal governments
  - nonprofit organizations
  - owners or operators of shoreline parcels
- **Eligible Locations:**
  - Sonoma, Marin, Napa, Solano, Alameda, Contra Costa, San Mateo, Santa Clara, and San Francisco counties
    - Must be consistent with Baylands Goals update (2015) and Subtidal Habitat Goals Report (2010)
  - Delta Primary Zone not eligible



# Eligible Project Phases

- **Project Phases:**
  - Acquisition
  - Planning
  - Design
  - Permitting
  - Construction/Implementation
  - Operation
  - Monitoring and Evaluation
  - Maintenance



# Prioritizing Equity and Community Engagement

---

- Adopted Resolution 70: “The Equity Recommendations”
- Updated Grant Program Materials and Processes
- Created a Community Grants Program
- Supporting New Partnerships
- Changing Funding Policies and Approaches to Lower Barriers to Community Participation



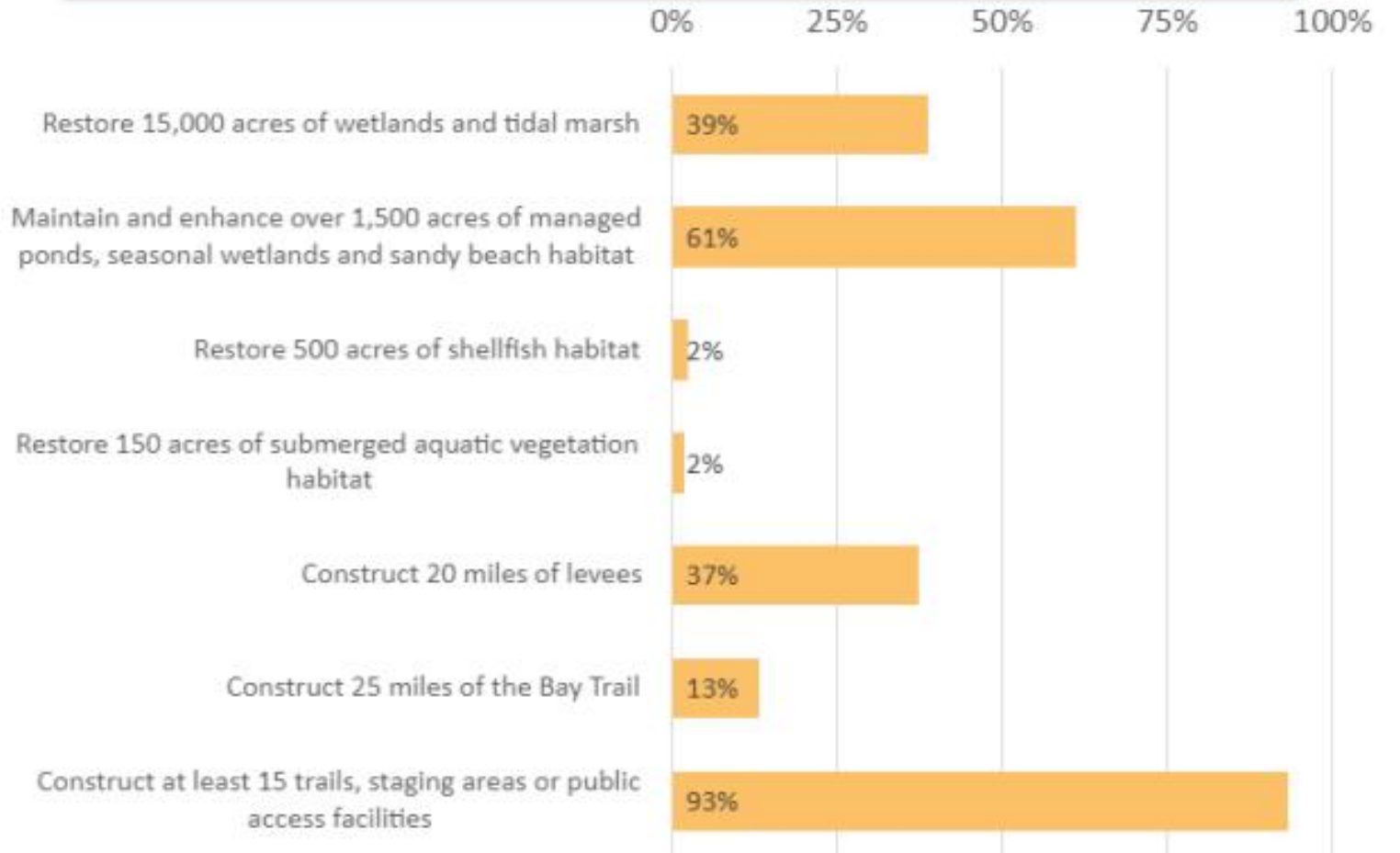
# Projects Funded

- 42 Projects funded to-date
- In each of the Bay Area's 9 counties



# Campaign Goals

## PROGRESS TOWARDS MEASURE AA CAMPAIGN GOALS





# Geographic Distribution of Funds

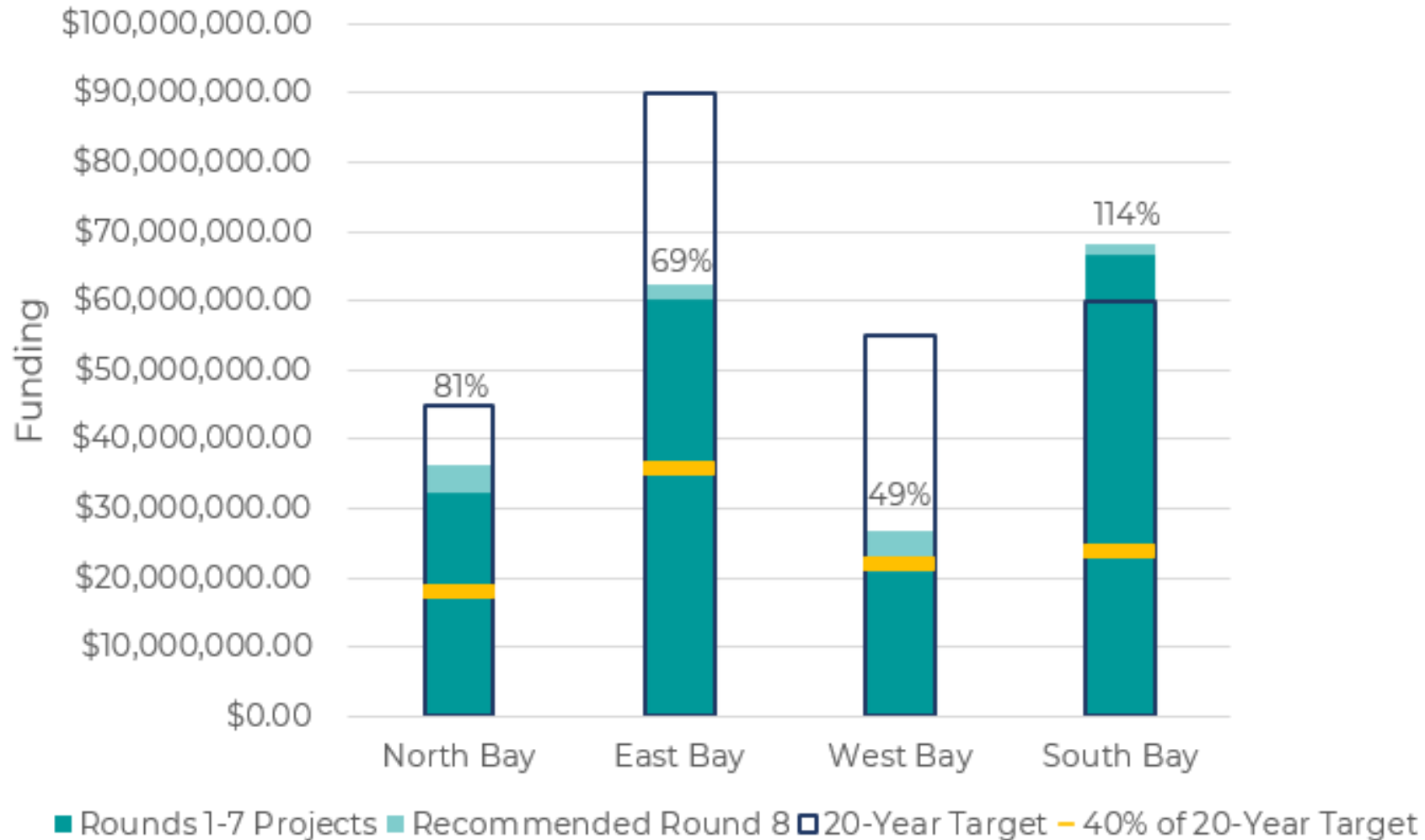
Region	Counties	Percentage
North Bay	Sonoma, Marin, Napa & Solano	9%
East Bay	Contra Costa & Alameda	18%
West Bay	San Francisco & San Mateo	11%
South Bay	Santa Clara	12%
Baywide	All 9 Counties	50%



Based on 2010 Census

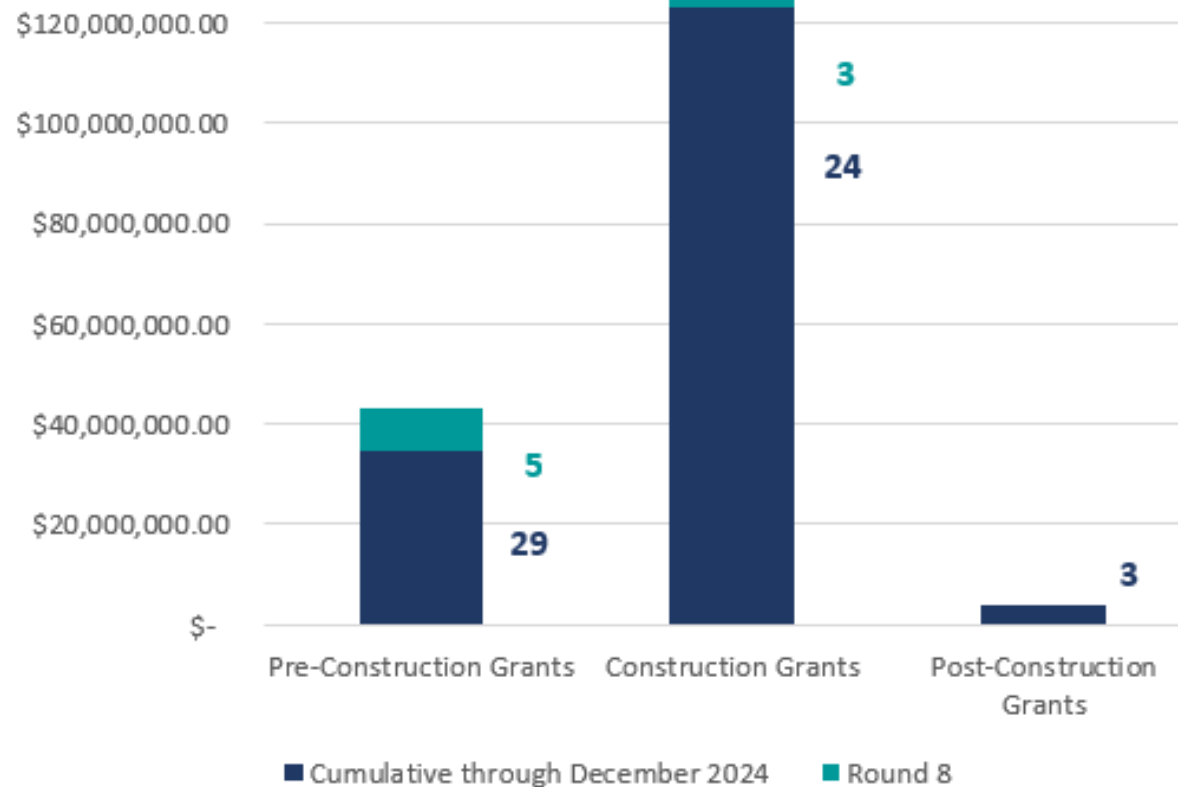
## Authorized and Recommended Funding (Rounds 1-8) compared to 20-year Measure AA Target

*Progress is shown compared to % expected at 8-year mark (40%)*



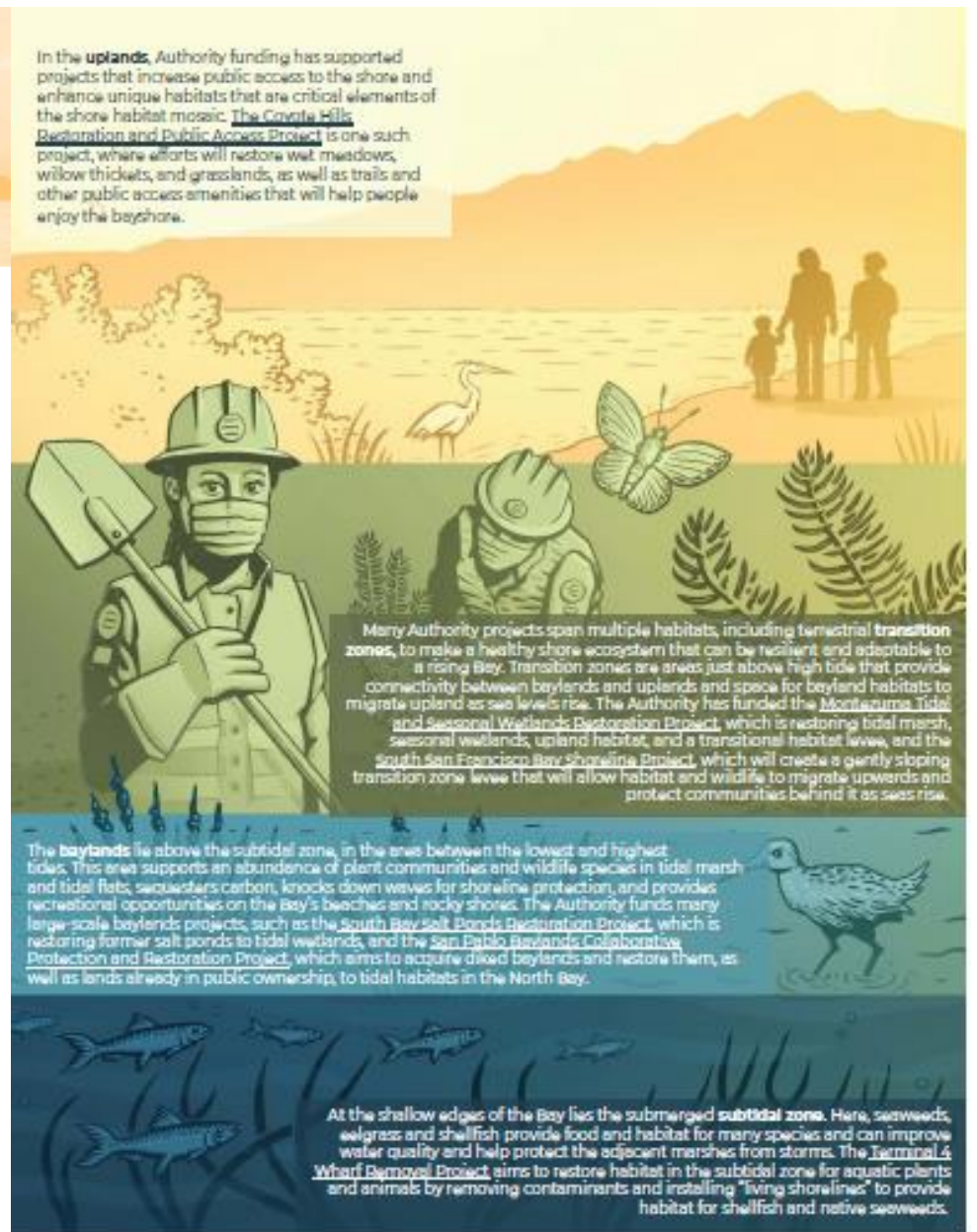
# Projects by Phase

Authorized and Recommended Number of Grants and Funding Amount by Phase



# Interconnected Bay Ecosystems

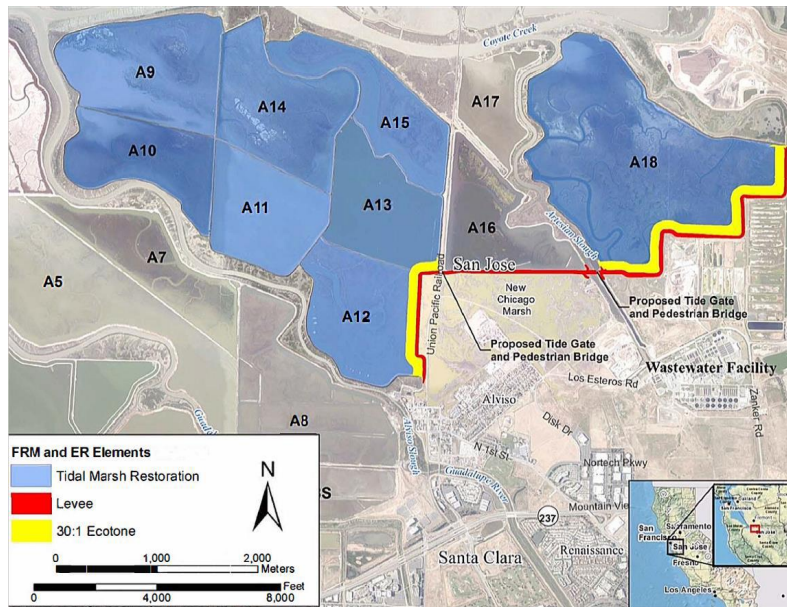
- A healthy shore is comprised of a suite of habitats spanning the terrestrial to open bay, from **subtidal** habitats to **baylands**, **transition zones**, and **upland**.
- The Restoration Authority funds projects that encompass each of these zones to derive the most cumulative benefit for the people and wildlife of the San Francisco Bay.
- In addition to funding projects across the spectrum of the Bay's habitat types, the Restoration Authority supports projects of all sizes, in all stages of development.
- Decades of development have made the San Francisco Bay a constrained, environmentally degraded and expensive place to restore.



# Examples of Projects the Authority Has Funded

## South Bay Shoreline Project

Two grants to Santa Clara Valley Water District totaling \$61 million for construction



## Tiscornia Marsh Restoration and Sea Level Rise Adaptation Project

Two grants to Marin Audubon Society totaling \$4.5 million for planning and construction

Both include:

- Habitat restoration
- Flood protection
- Public access
- Benefits to economically disadvantaged communities



**SAN FRANCISCO BAY**  
RESTORATION AUTHORITY



# More Examples of Projects the Authority Has Funded

**Heron’s Head Park Shoreline Resilience Project**  
Two grants totaling \$1.1 million to the Port of San Francisco for implementation and monitoring



<https://www.lejyouth.org/index.php/eco-apprentices/>

Hiring and training local young adults in bay ecology and hands-on conservation and conducting post-construction monitoring

**Lower Walnut Creek Restoration Project**  
\$7,929,855 to Contra Costa County for implementation



<https://www.sfbayrestore.org/projects/lower-walnut-creek-restoration-project>

Restoring creekside wetland habitat by breaching levees to reintroduce the tides to diked former baylands



# Community Grants Program

- Fund **projects led by community-based organizations** in economically disadvantaged communities (EDCs)
  - Community visioning
  - Training and education
  - Relationship building
  - Implementation of shoreline habitat projects



Oakland Shoreline Leadership Academy hosted by WOEP

# Achievements and Challenges

- Marin City Urban Wetland Community Visioning Project
- Candlestick Point Stewardship Project
- Bay Restoration: Youth Engagement and Service Learning in East Oakland
- San Leandro (Lisjan) Creek Community Project
- Oakland Shoreline Leadership Academy



Planting Justice, Oakland



# Goals of the Equity Guidelines

- Build on the principles in the existing equity recommendations
- Put those principles into guidelines that extends the full length of the Measure AA timeframe
- Including:
  - 5-year work plans
  - Desired outcomes
  - Strategies to achieve the outcomes
  - Performance measures that can be used to evaluate progress on an annual basis



# The Equity Guidelines Outline

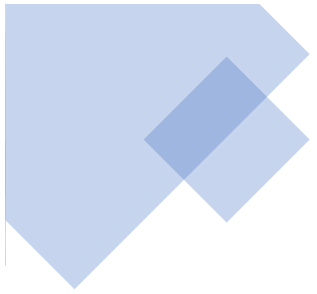
1. Representation
2. Outreach and Partnerships
3. Applications and Grants
4. Meaningful Engagement
5. Project Benefits
6. Accountability and Transparency



# Opportunities for AC Members

- Attend AC and Board meetings
- Work with Staff to Implement Equity Guidelines
  - Join the Equity Subcommittee!
- Support Community Grants Cohort
  - Help train community-based grantees!
- Recruit more EJ and Tribal reps to apply for AC
- Participate in Networking Sessions
- Review Grant Applications
- Review Annual Report





**SAN FRANCISCO BAY**  
RESTORATION AUTHORITY

