



# SAN FRANCISCO BAY

RESTORATION AUTHORITY

## Measure AA Project Selection and Management

Karen McDowell, Deputy Program Manager  
Oversight Committee Meeting  
April 6, 2023

# Project Selection Process

- **Eligibility Criteria**

- E.g., extent to which the project would implement multiple goals of Measure AA, especially the habitat restoration goal

- **Prioritization Criteria**

- E.g., whether the project would benefit economically disadvantaged communities

- **Project's Likelihood of Success**

- E.g., whether the landowner had expressed strong support for the project





# Measure AA Prioritization Criteria



- Greatest positive impact
- Greatest long-term impact
- Geographic distribution
- Leverage state and federal dollars, public/private partnerships
- Benefit economically disadvantaged communities (EDCs)
- Benefit region's economy
- Engage youth and young adults
- Incorporate monitoring, maintenance and stewardship
- Meet selection criteria of Conservancy, SF Bay Conservation and Development Commission and SF Bay Joint Venture



# Measure AA “Likelihood of Success” Criteria

Project’s Likelihood of Success,  
based on:

- Applicant’s capacity and resources to complete and maintain the project
- Project’s level of community involvement and benefits and/or innovative partnerships

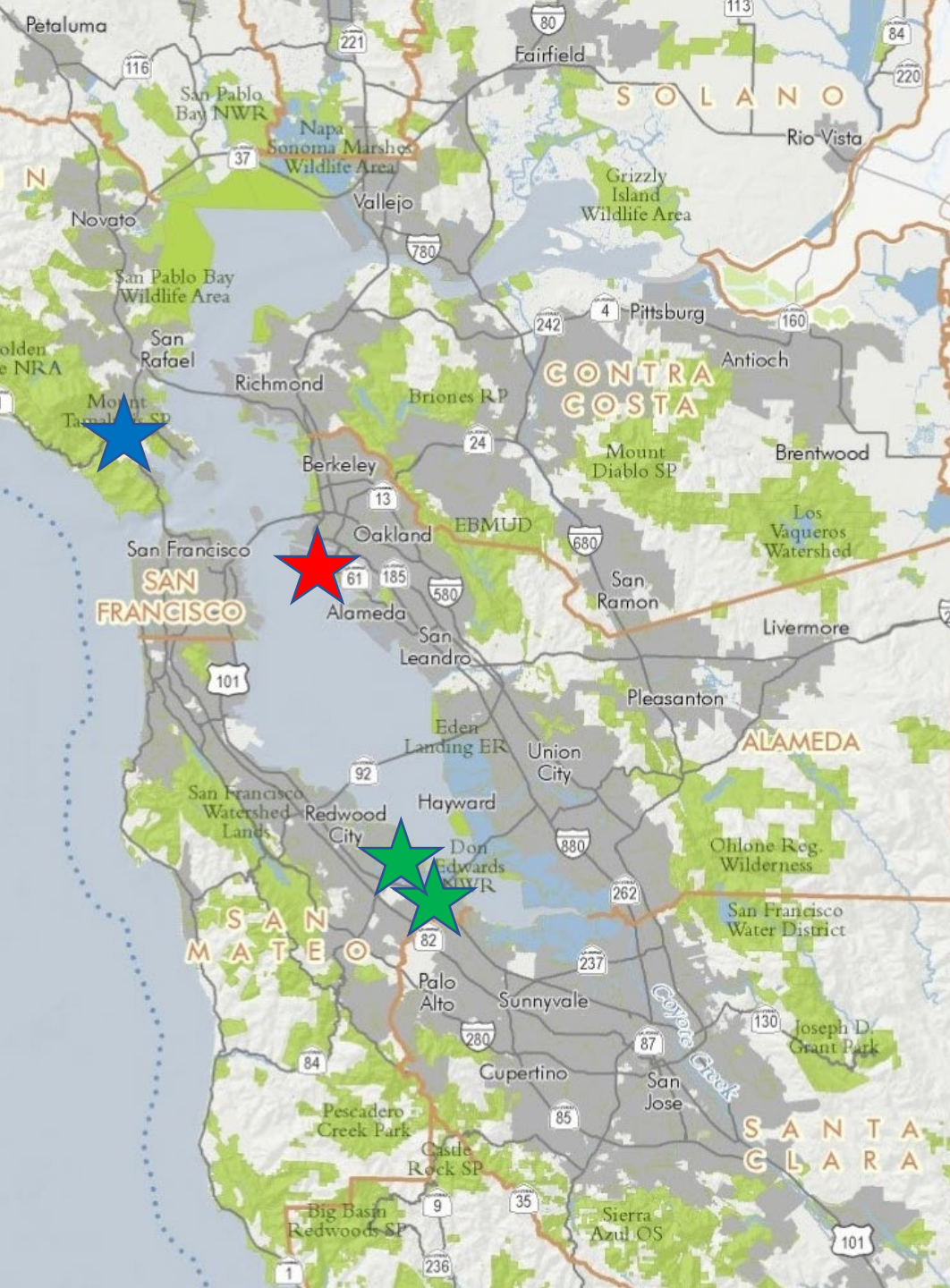


# Projects Funded in FY 21/22 – Existing Projects

- **South Bay Shoreline Project: \$11.4 M** (Total = \$50M)
- **BRRIT: \$1.3 M** (Total of \$3.8 M)
  - Awarded \$650,000/year for 5 years from SFBRA + \$600,000/year for 5 years from outside contributors (\$3.25 M from SFBRA)
  - \$375,000/year from outside contributors is coming through the SFBRA (\$1.875 M)
  - The remaining amount is contributed directly to the agencies from the State Coastal Conservancy
- **Tiscornia Marsh Restoration Project: \$3 M** (Total \$4 M, previous funds for planning)
- **San Pablo Baylands Collaborative Protection and Restoration Project: \$1.3 M** (Total = \$4 M)
- **Burlingame Shoreline Park Project: \$1 M** (Total = \$1.5 M)
- **Community Grants Program: \$400,000** (Total = \$600,000)





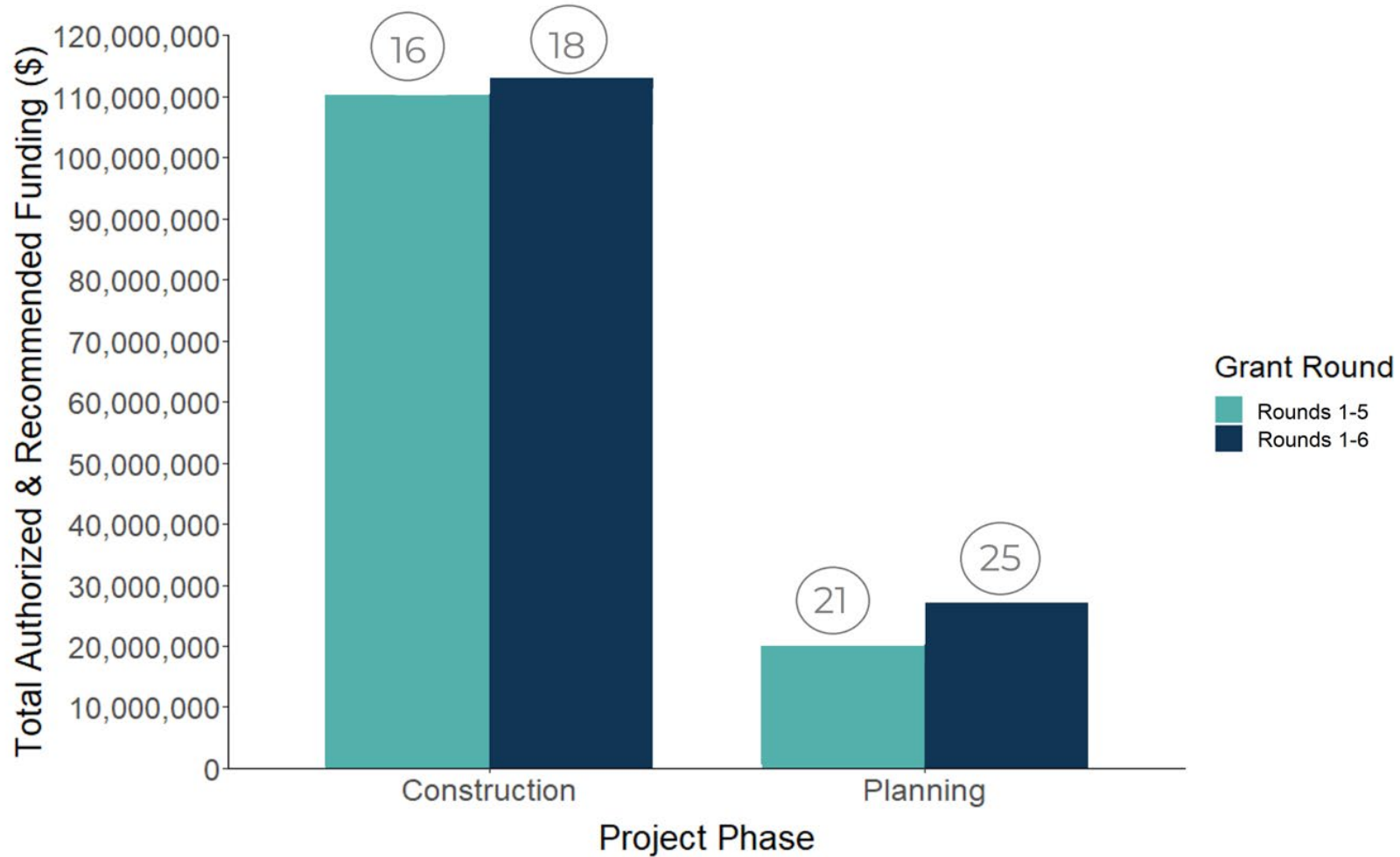


# New Projects in FY 21/22

- Science Elements for the Wetlands Regional Monitoring Program: \$1.5 M
- Regionally Advancing Living Shorelines: \$500,000
- Evolving Shorelines at Bothin Marsh: \$255,000
- **De-Pave Park: \$800,000**
- Baylands Habitat Restoration & Community Engagement in East Palo Alto: \$688,016
- Strategy to Advance Flood Protection, Ecosystems and Recreation along San Francisco Bay - SAFER Bay Project: \$1 M



# Projects by Phase





# Project Management

- Project Manager
- Key Documents
  - Staff Recommendation
  - Grant Agreement
  - Work Program & Budget (Deadlines and Deliverables)
  - Progress Reports & Invoices
- Project Close-out





# Overview of Challenges



- Bid Process Issues
- Permitting Challenges
- Technical Assistance Needs
- Funding Shortfalls
- Pandemic Impacts

Photo: Colma Creek, City of South San Francisco



# Bid Process Issues



- Deer Island Basin Project
- 900 Innes Remediation Project





# Permitting Challenges



Lower Walnut Creek  
Restoration Project

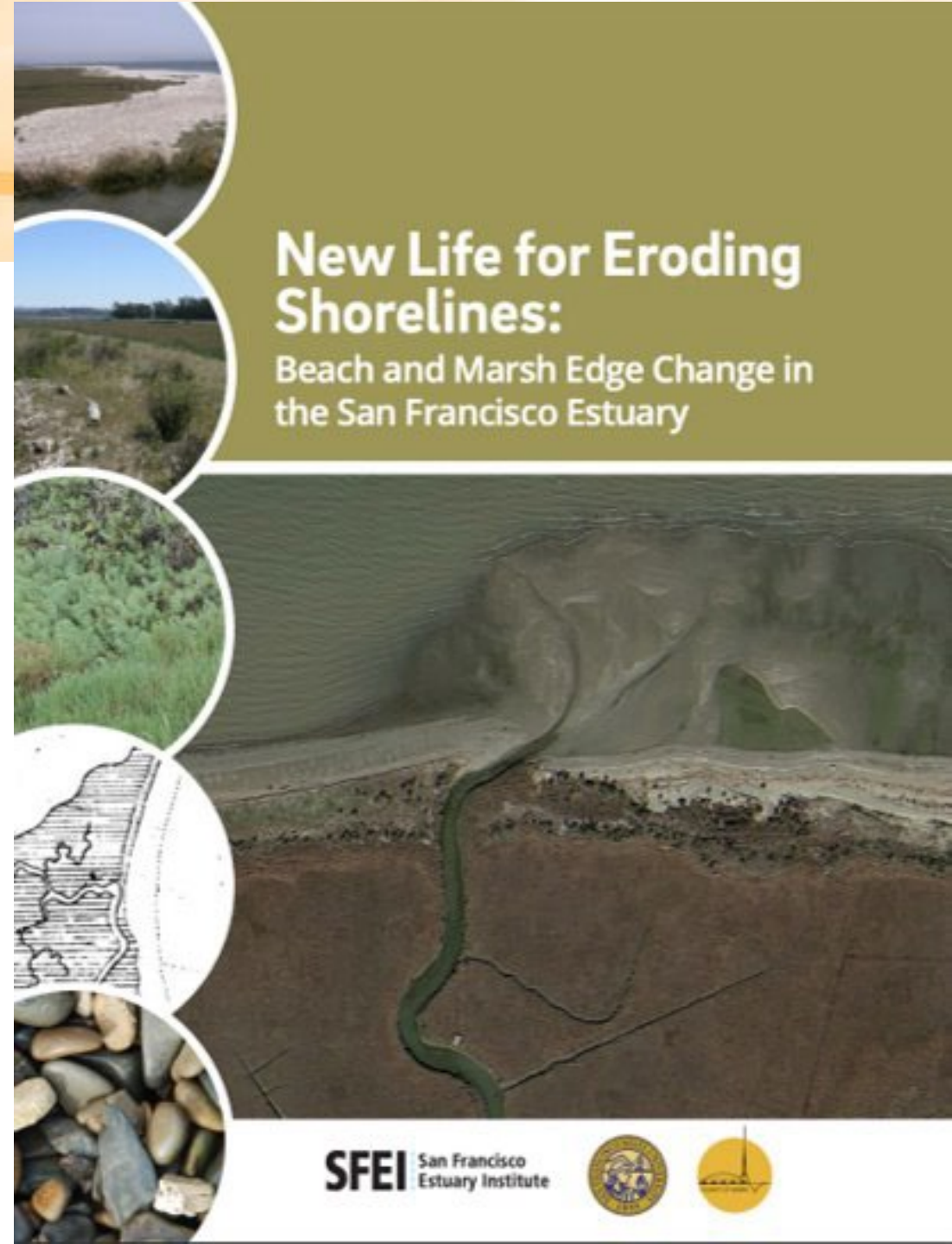


South Bay Salt Ponds Project



# Technical Assistance Needs

- Staff support
- Technical Advisory Committees





# Funding Shortfalls



Heron's Head Park Shoreline Resilience Project



# Pandemic Impacts

- Transition to remote working
- New safety protocols for field work
- Supply chain disruptions
- Shifting youth engagement tactics
- Moving community engagement online or outdoors



Photo: Shore Up Marin City



# Conclusion



Photo: Montezuma Wetlands, LLC

- We have a system in place to identify challenges relatively early.
- Our projects are moving forward, despite the challenges!





**SAN FRANCISCO BAY**  
RESTORATION AUTHORITY

**Questions?**

[www.sfbayrestore.org](http://www.sfbayrestore.org)