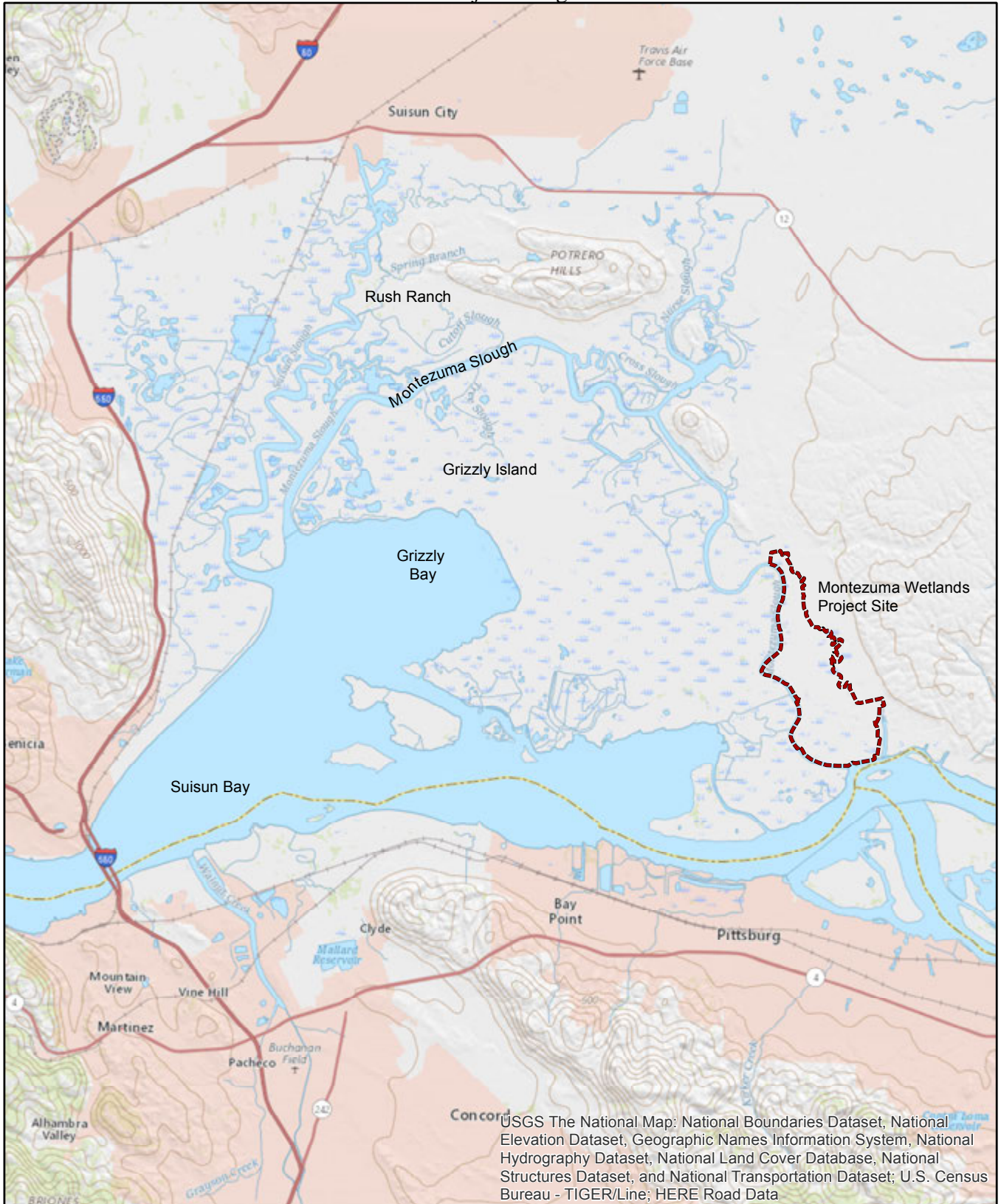
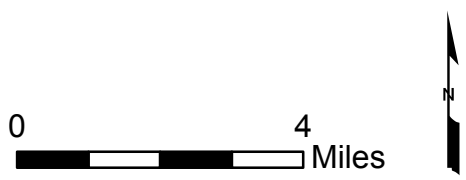



Exhibit 3. Project Designs

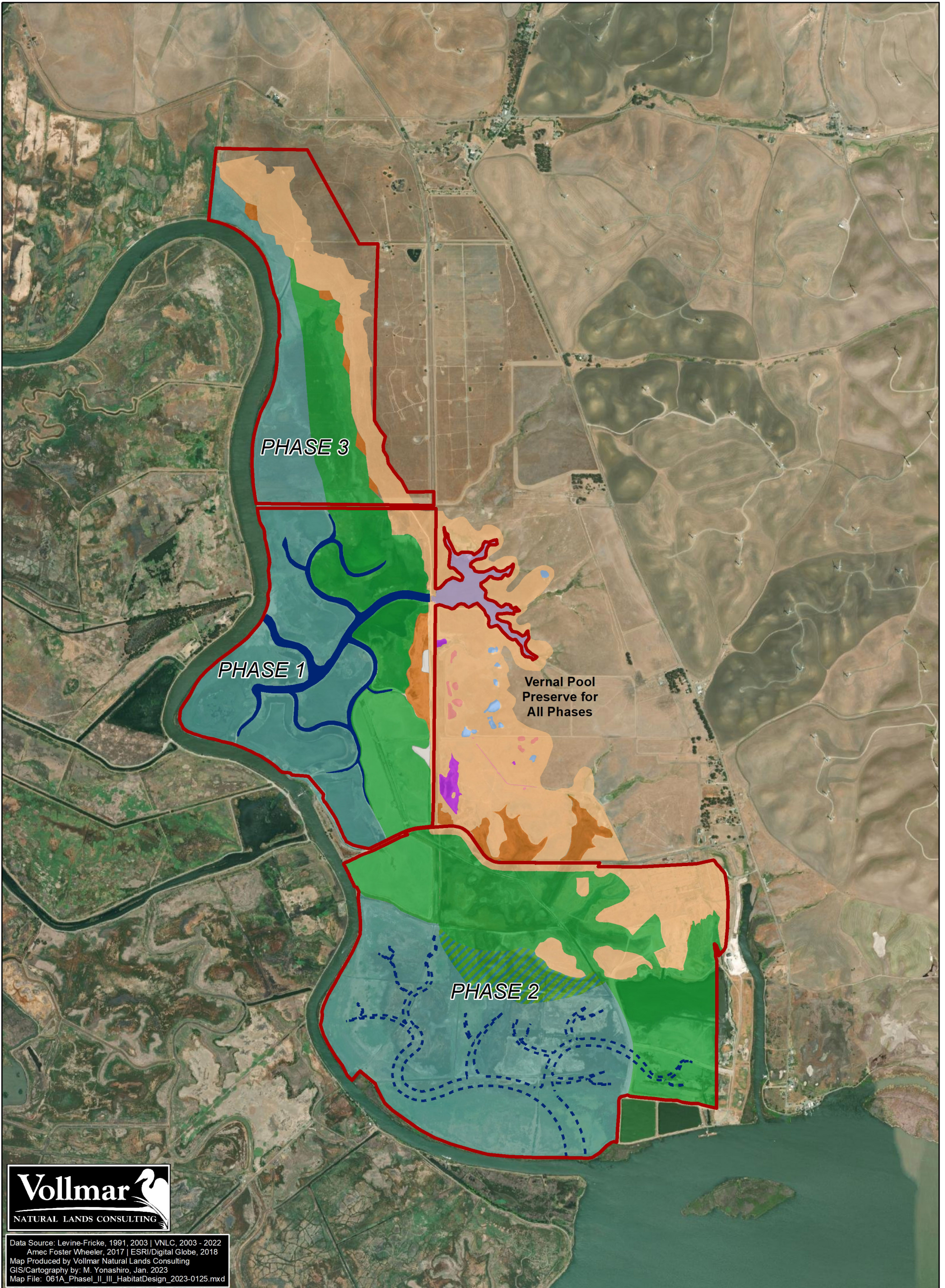


USGS The National Map: National Boundaries Dataset, National Elevation Dataset, Geographic Names Information System, National Hydrography Dataset, National Land Cover Database, National Structures Dataset, and National Transportation Dataset; U.S. Census Bureau - TIGER/Line; HERE Road Data

P:\Project\11000s\Montezuma\14000 Database_CAD\Measure\Grant1_Siteloc\Map.mxd



| | | |
|--|--------------------------|---|
| <p>REGIONAL MAP Montezuma Wetlands Project Suisun Bay, California</p> | |  <p>amec foster wheeler</p> |
| <p>Date: 11/05/2017</p> | <p>Project No. 11095</p> | |
| | | <p>Figure 1</p> |

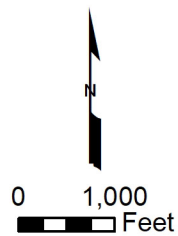


Data Source: Levine-Fricke, 1991, 2003 | VNLC, 2003 - 2022
 Amec Foster Wheeler, 2017 | ESRI/Digital Globe, 2018
 Map Produced by Vollmar Natural Lands Consulting
 GIS/Cartography by: M. Yonashiro, Jan. 2023
 Map File: 061A_PhaseI_II_HabitatDesign_2023-0125.mxd

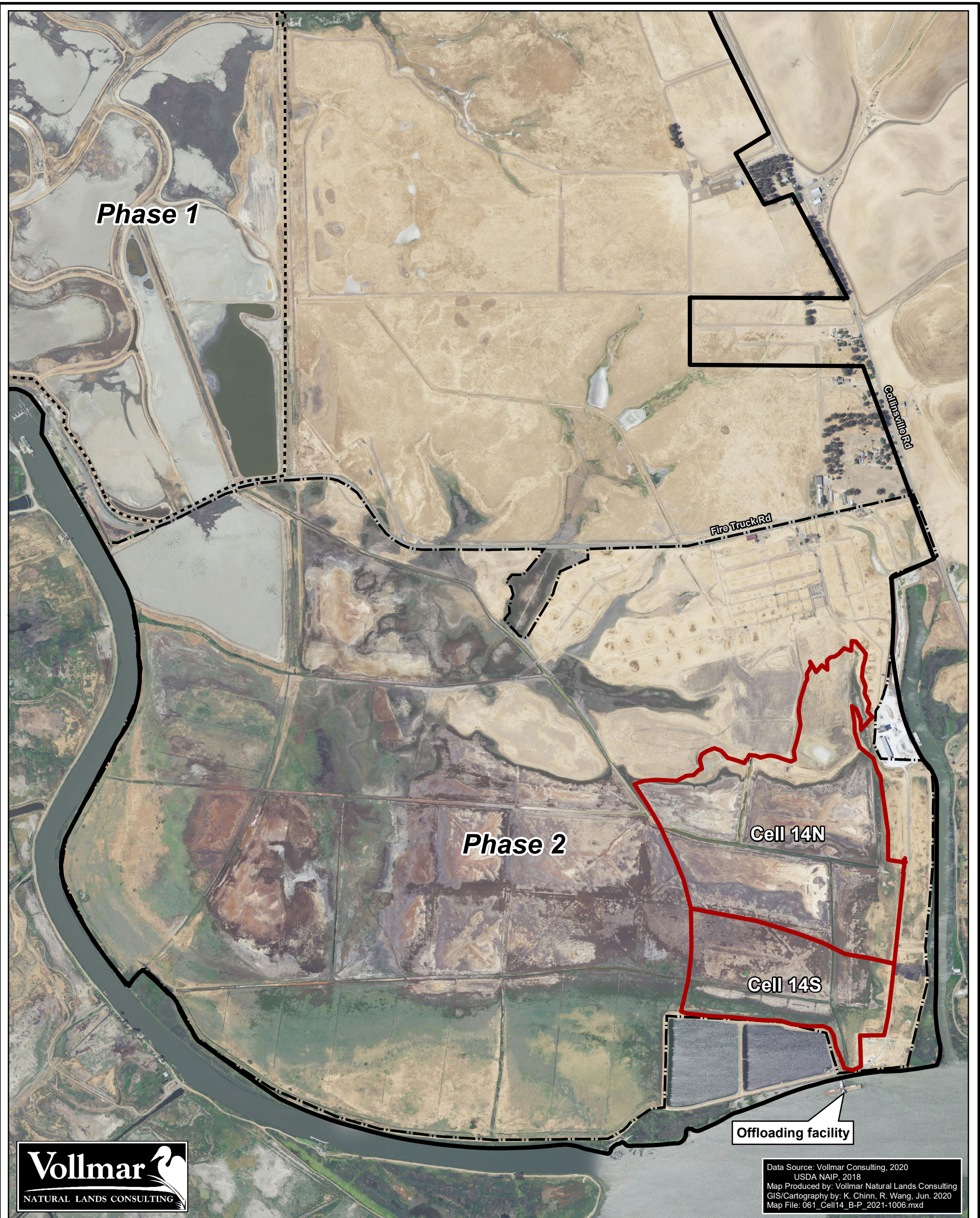
Explanation:

- | | |
|----------------------------------|------------------------------|
| Phase Boundary | Created Vernal Pool |
| Clank Hollow | Preserved Vernal Pool |
| Intertidal Channel | Avoided Vernal Pool |
| Low Intertidal Marsh | Upland Transition and Buffer |
| High Intertidal Marsh | Seasonally Wet Depression |
| High Marsh if Cell 15S is Built | Least Tern Area |
| Anticipated Future Tidal Channel | |

Note: Vernal pool preserve is mitigation for all phases.



| | | |
|---|-------------------|---------------------|
| PHASE I AND PROPOSED PHASE II HABITAT DESIGN Montezuma Wetlands Project | | Figure 2 |
| Date: 01/26/2023 | Project No. 11095 | |



Legend

- Cell 14 Boundary
- Phase I Boundary
- Phase 2 Boundary
- Project Boundary

FIGURE 3
Active Phase 2 Sediment Placement Areas

Montezuma Wetlands Project
Solano County, California



1:12,500
(1 in = 0.2 mi at tabloid layout)

