

# Item 6: Update on Aligning Wetlands Regional Monitoring Program Indicators, State of the Estuary Report Metrics, and Authority Performance Measures

Heidi Nutters, Senior Program Manager, SF Estuary  
Partnership  
April Robinson, {TITLE}, SF Estuary Institute

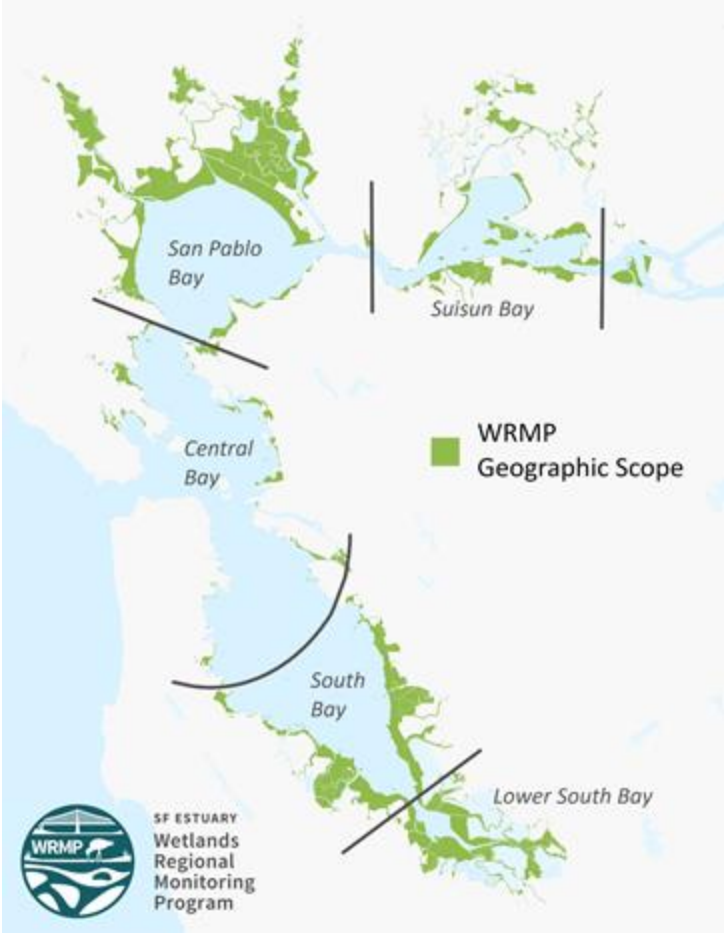
SF ESTUARY  
Wetlands  
Regional  
Monitoring  
Program



# Presentation Goals

- Provide an update on the Wetland Regional Monitoring Program
- Discuss possible approaches to performance measures
- Introduce the State of the Estuary Report and possible nexus
- Discussion/Questions

# WRMP Scope and Focus

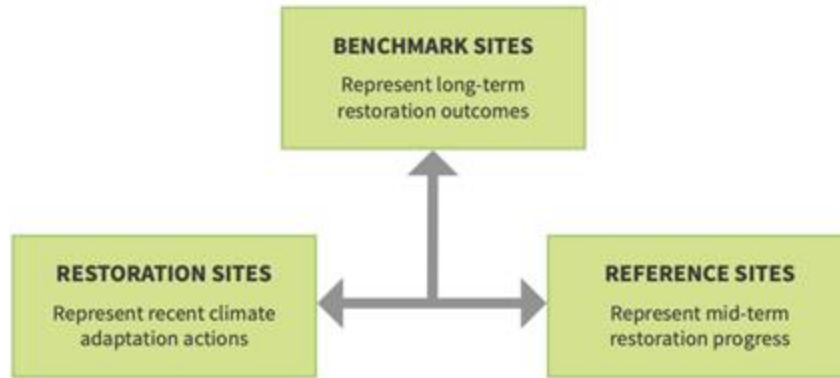


- Establish a robust, sustainable program
- Better utilize existing data to answer some of the regions most critical questions
- Maintain an inclusive, collaborative process
- Stable funding is critical to success

# 1. Establish WRMP Monitoring Site Network

## Regional Monitoring Site Network

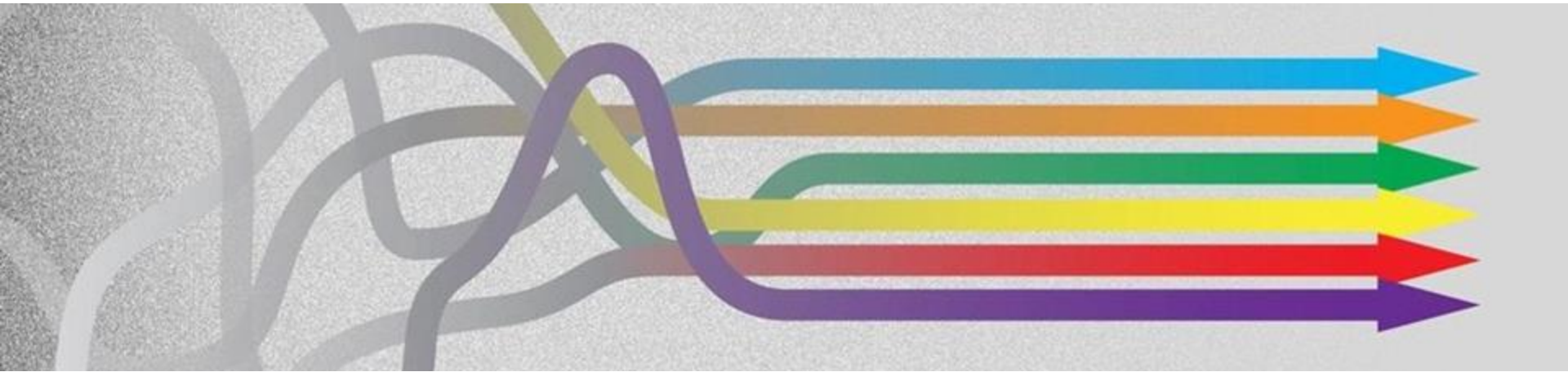
---





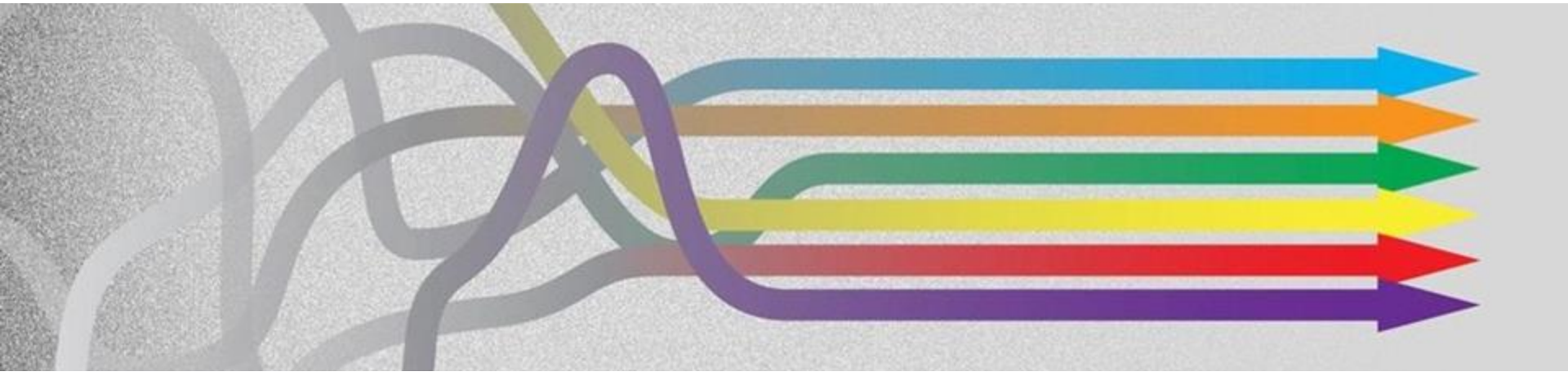
## 2. Align Performance Metrics

Align SFBRA performance metrics with WRMP indicators



## 2. Align Performance Metrics

Align SFBRA performance metrics with WRMP indicators



# Align Performance Metrics - AC Process to Date

- Ad-hoc Subcommittee on Performance Metrics
- How we currently report on metrics:
  - Annual Report
  - Restoration Authority Dashboard
  - EcoAtlas Project Tracker
- Metrics are reported at the project level
- Alignment between SFBRA and WRMP as long-term goal

# Align Performance Metrics - Key Questions

- How do we tell the story of the Restoration Authority?
- What performance metrics are priority?
- How can we align with related programs to amplify the message and tell our story to a broader audience?



# 2. Align Performance Metrics

## Timeline by Year

Phase 3 (SFBRA-Supported)		
Year 1	Year 2	Year 3
<p><b>SFBRA Performance Measures Alignment</b></p> <ul style="list-style-type: none"><li>● Resolve geospatial accounting method differences</li><li>● Determine habitat restoration and conversion thresholds</li><li>● Conduct outreach</li></ul>	<p><b>Multi-Indicator Alignment</b></p> <ul style="list-style-type: none"><li>● Coordinate salient indicator “crosswalks” with partner programs: Bay RMP, State of the Estuary Report, SFB Joint Ventures, etc</li><li>● Track landscape change across the region</li><li>● Conduct outreach</li></ul>	<p><b>Sharing Results</b></p> <ul style="list-style-type: none"><li>● Revise indicator metrics as required</li><li>● Enhance SFBRA dashboard visualizations</li><li>● Share report featuring indicators / performance measures</li></ul>

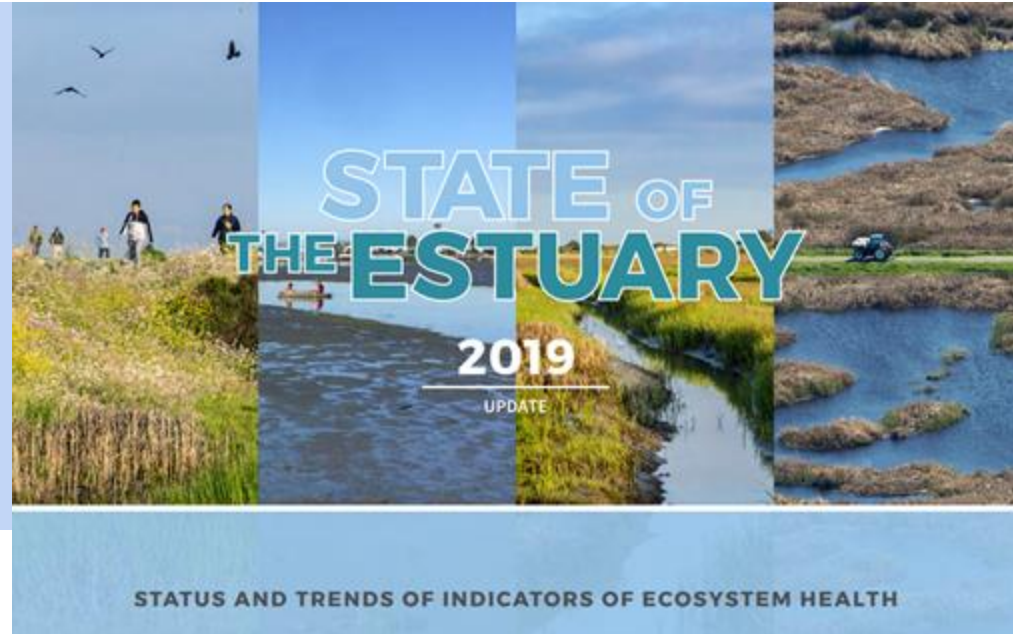
# Align Performance Metrics

Aligning restoration acreage metrics will:

1. Improve a fundamental performance metric
2. Explain inconsistencies in past mapping and reporting

# Sharing the Message - State of the Estuary Report

- The most comprehensive health report for the San Francisco Estuary.
- Uses the best available science and recent data to assess the status of various aspects of the ecosystem.
- Purpose is to identify problems with estuarine health, so that conservation and restoration efforts can focus on developing solutions.



# Align Performance Metrics

Functional performance measures can highlight:

1. Benefits realized through restoration
2. Contributions to a healthy estuary

# Key Components of SOTER 2024

Improve our ability to communicate about the health of the Estuary by:

- Developing an online data platform for SOTER
- Improving coordination and alignment of SOTER with other regional monitoring efforts



# Benefits of Restoration Authority/ SOTER Alignment

- Opportunities to provide advice and review on the development of the SOTER online platform
- SOTER online platform can increase the reach and visibility of work on specific indicators
- Opportunities for co-fundraising, coordination, and communication
- Consistent messaging across efforts

# Opportunities to Align Performance Metrics - Fish

SOTER fish indicator  
 WRMP fish monitoring SOP  
 SBSP fish monitoring data

UPPER ESTUARY FISH COMMUNITIES			
UPPER ESTUARY INDICATORS	SUBREGION	STATUS	TREND
Native Fish Abundance	Suisun Marsh	Fair	Declining
	Suisun Bay Pelagic	Very Poor	Declining
	Central West Delta Pelagic	Very Poor	Declining
	Delta Beach Zone	Very Poor	Declining
	Suisun Marsh	Poor	Improving
	Suisun Bay Pelagic	Poor	Stable
	Central West Delta Pelagic	Very Poor	Stable
	Delta Beach Zone	Very Poor	Declining
	Suisun Marsh	Poor	Stable
	Suisun Bay Pelagic	Fair	Stable
	Central West Delta Pelagic	Very Poor	Declining
	Delta Beach Zone	Very Poor	Stable



**STATUS AND TREND**

BAY

DELTA

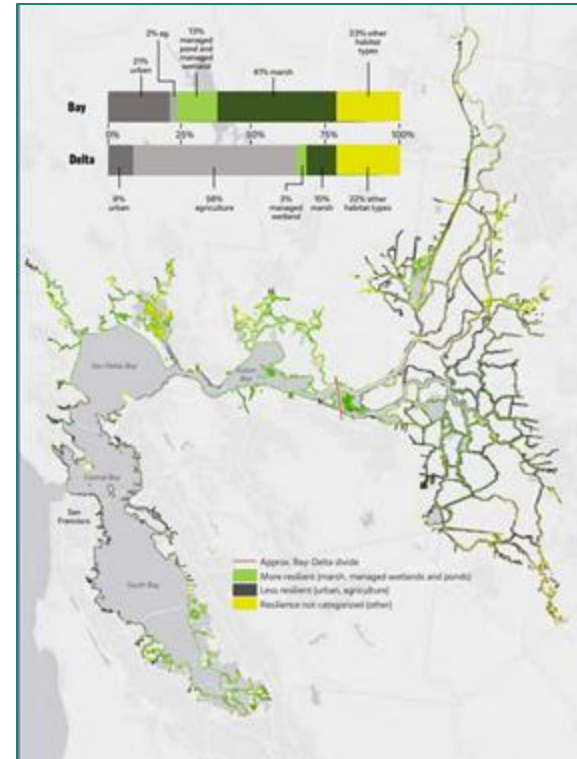
**LEGEND**

STATUS	<span style="color: green;">●</span> Good	<span style="color: yellow;">●</span> Fair	<span style="color: red;">●</span> Poor
TREND	Improving	No Change	Declining
			Mixed

# Opportunities to Align Performance Metrics

## - Shoreline Resilience

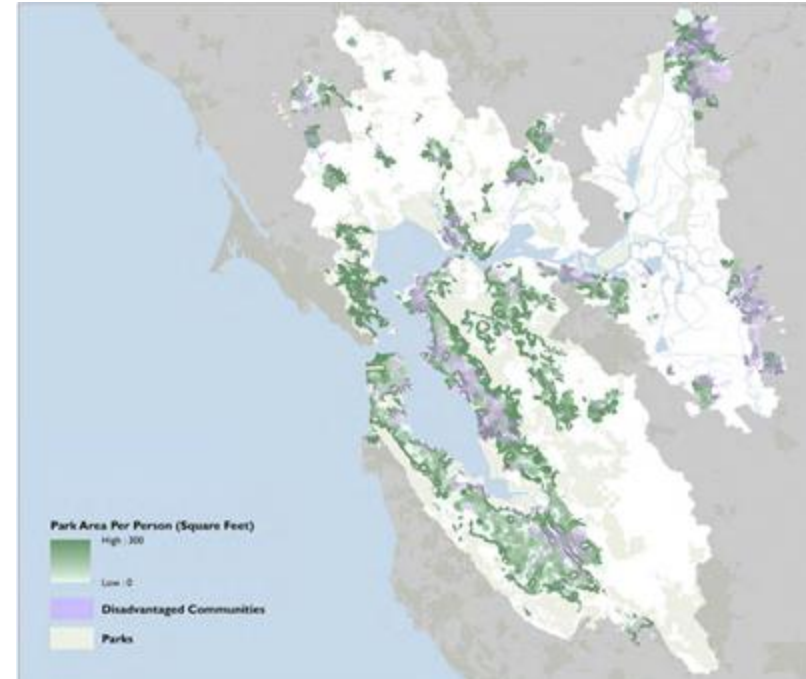
- How resilient is the shoreline for people and wildlife?
- 2019 SOTER Emerging Indicator focused on shoreline land cover and development
- This indicator will be more fully developed for 2024 report



# Opportunities to Align Performance Metrics

## - People and Wetlands

- How do we measure and support equitable access to the Estuary and its resources?
- 2019 SOTER Emerging Indicator focused on park area per person in urban locations
- WRMP People and Wetlands workgroup will help with development of future indicators



# Related Efforts - Possible Opportunities to Coordinate

- SFBRA Performance Measures
- WRMP Indicators/ Monitoring/ SOPs
- SOTER Indicators
- Delta Plan Ecosystem Amendment Performance Measures
- Bay RMP Monitoring/ Pulse of the Bay
- Delta RMP Monitoring
- State of the Birds Report
- Bayland Goals Reports



# Advisory Committee Engagement - Discussion Questions

- How does the AC want to be engaged in development of performance metrics?
- Does the general direction of aligning with SOTER seem like a good fit?
- What other opportunities to coordinate with relevant programs and projects?

# Thank you!

- Heidi Nutters - SFBRA Project Manager ([heidi.nutters@sfestuary.org](mailto:heidi.nutters@sfestuary.org))
- April Robinson - SFEI (Grantee) Project Manager ([april@sfei.org](mailto:april@sfei.org))